



Cedar Hill Housing

Carter Balliet

Video Link: [Cedar Hill Housing Final Presentation.mp4](#)

Cedar Hill Housing is a new housing complex on the top of Elizabethtown Campus, across the street from Ober, and next to Founders. This new area has three different apartment layouts, across 6 different buildings. These are distributed 4 Cedar, 1 Willow, and 1 Pine Apartment Building. Each has its unique advantages, based on location, and amenities. Among these, the Cedar Apartments are the highest end, providing a view over the rest of campus, and a porch. The combination of apartments on top of Cedar Hill creates a sense of a small town, with a natural unity formed because of their similar styles, and building materials (Proportion and Scale Slide 21-22). Changes to the lower part of campus include updated pathways, as well as a fountain. This updated pathway will also lead to new apartments. Additionally, Cedar Street no longer connects all the way through. This street is cut off at the top of Ober, allowing for a new continuous grassy area up to the housing. Traffic is rerouted behind the addition, to Cherry Street. Cherry Street will connect to the parking lot near the tennis courts. An addition to this lot will be made to accommodate the increase in residents.

Site Map



Entrance Concept

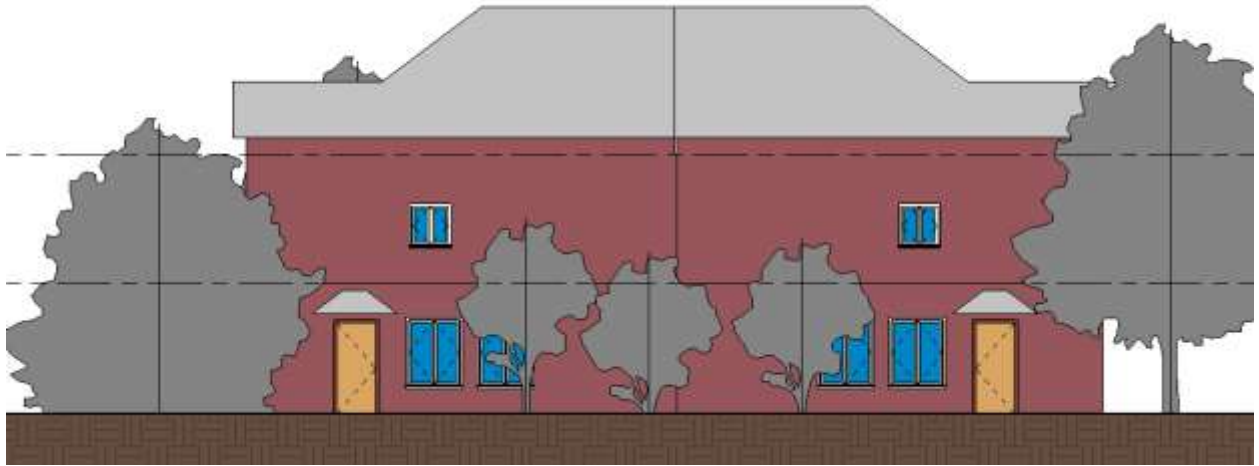


Cedar Apartments

Cedar Apartment Buildings each house 8 people total, 4 on each side of the building. These buildings are situated along the front of the property, taking advantage of the view over the courtyard below. Each of these buildings is designed out of brick, to maintain the style of the surrounding dorm halls. Windows are placed along the front of the building, and along the back side, gaining light from both the West and East sides. The buildings are placed in groups of two, near each other. Each module is positioned so that the porch along the back of the house is more secluded. The two modules positioned on the front property, look out over the courtyard, while the other two buildings are positioned with the porches facing each other and are facing open areas off campus.

Inside the house, there is the main kitchen and living space. To define the living space from the kitchen and dining areas, the floor is sunken in a step or two from ground level. This creates a cozy area, with a carpeted living room and a wooden floor dining room (Form and Space, Slide 19-29).

Front Cedar Apartments



Section View



Front Side

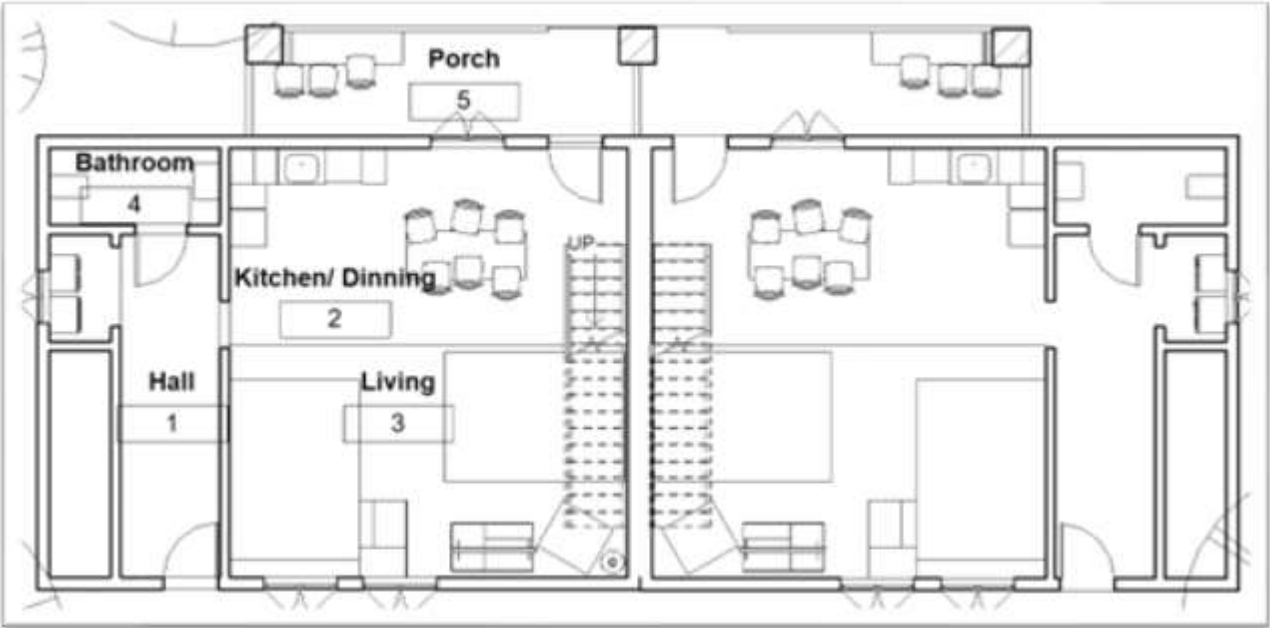


Back Side

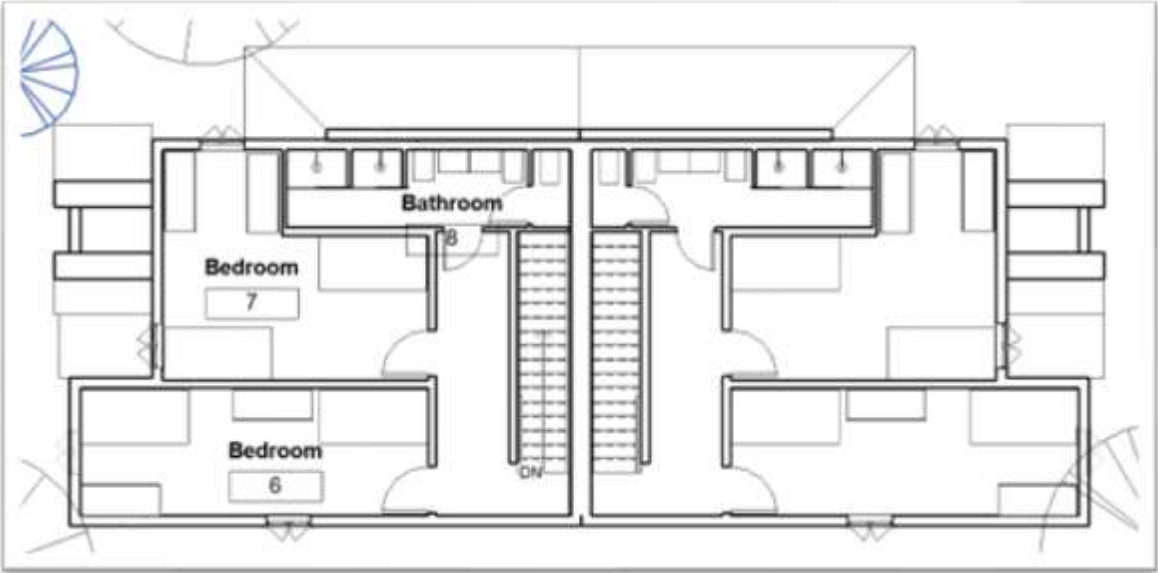


The floor plan in this design and the other buildings are designed to allow maximum sunlight in living spaces. This means that the adjoining wall between units is where the staircase is located. The other side is the closets and amenities. This leaves the front and

back sides open for windows. Ground Floor Plan



Floor 2 Plan



Living Room Rendering



Willow Apartments

The Willow Apartments have a very similar layout to the Cedar buildings. These apartments are designed with lots of natural light with bands of windows around the dining area (Frank Lloyd Wright). Willow Apartments also have subtracted shapes from the outside of the building, taking away from the box shape, and providing variety in roofing (Form Slide 108). These apartments don't have a view over campus but are in the middle of this new housing complex. Each apartment looks out over a grassy field behind the complex, looking down toward the amphitheater. Willow apartments and the others included are situated with living spaces on the first floor, and bedrooms on the second. This is to allow more privacy and a quieter space to get away from the noise downstairs.

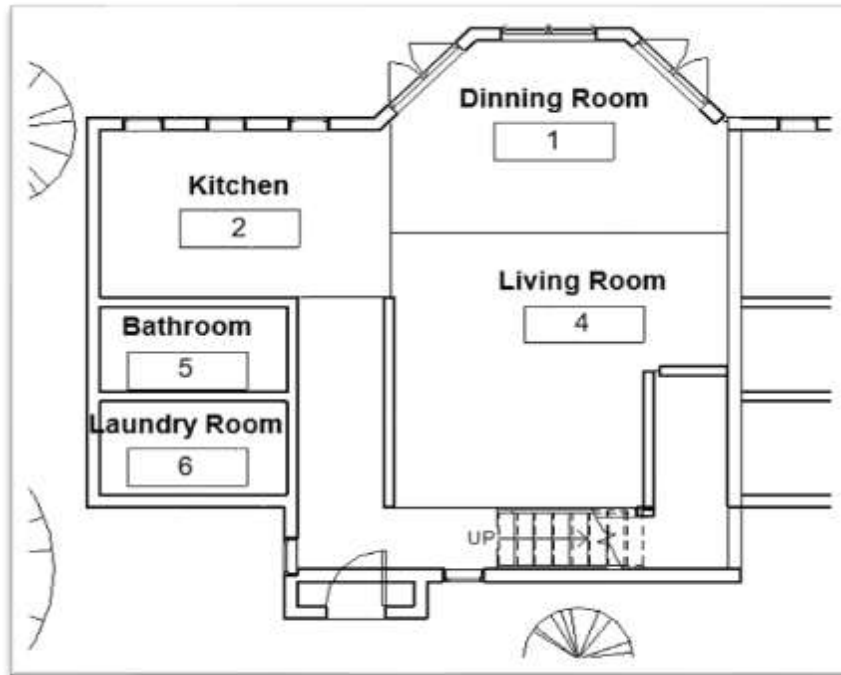
Front Side



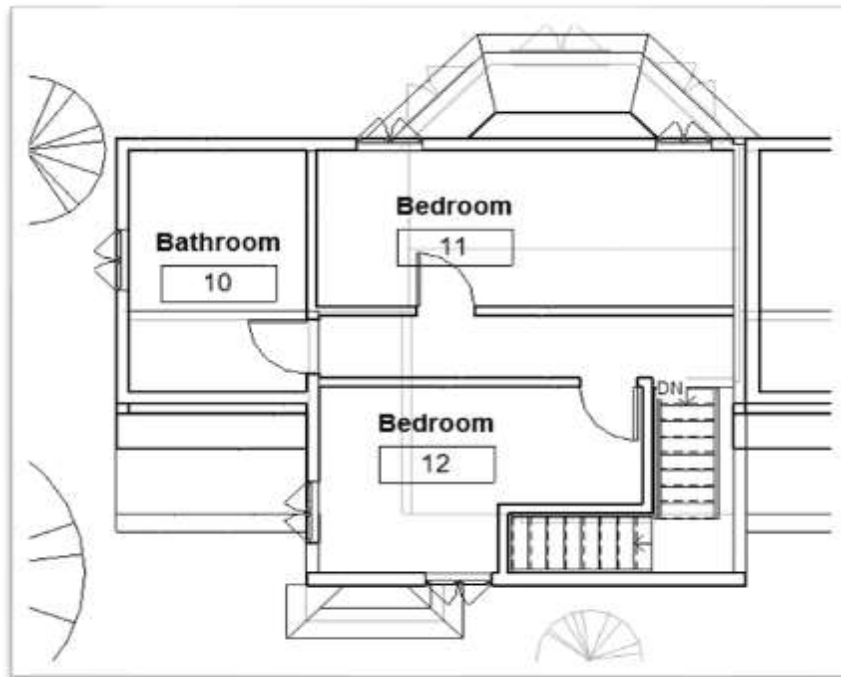
Back Side



Ground Floor Plan



Floor 2 Plan



Pine Apartments

The Pine Apartments is the last building on Cedar Hill. These apartments are the smallest and have the most basic design. They share a laundry room between neighboring units and include all the other basic amenities. This building is located next to Founders, on the Northeast side of the property. They provide all basic amenities similar to the other two, however have a shared entrance with neighboring units, and shared laundry.

2-Point Initial Concept for Pine Apartments



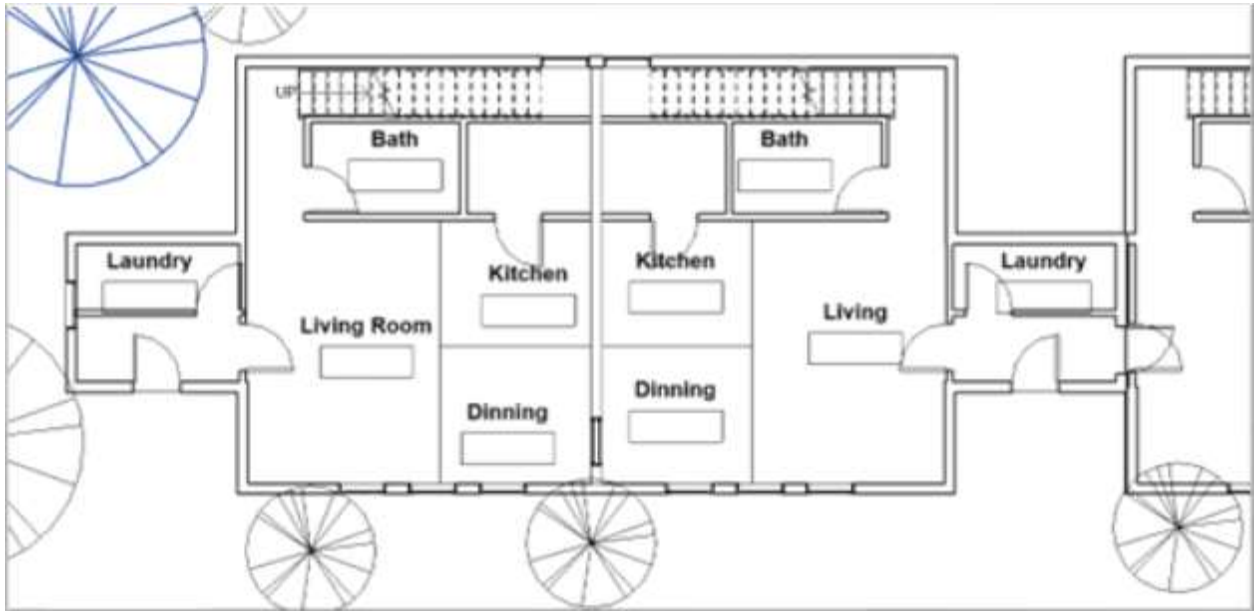
Front Side



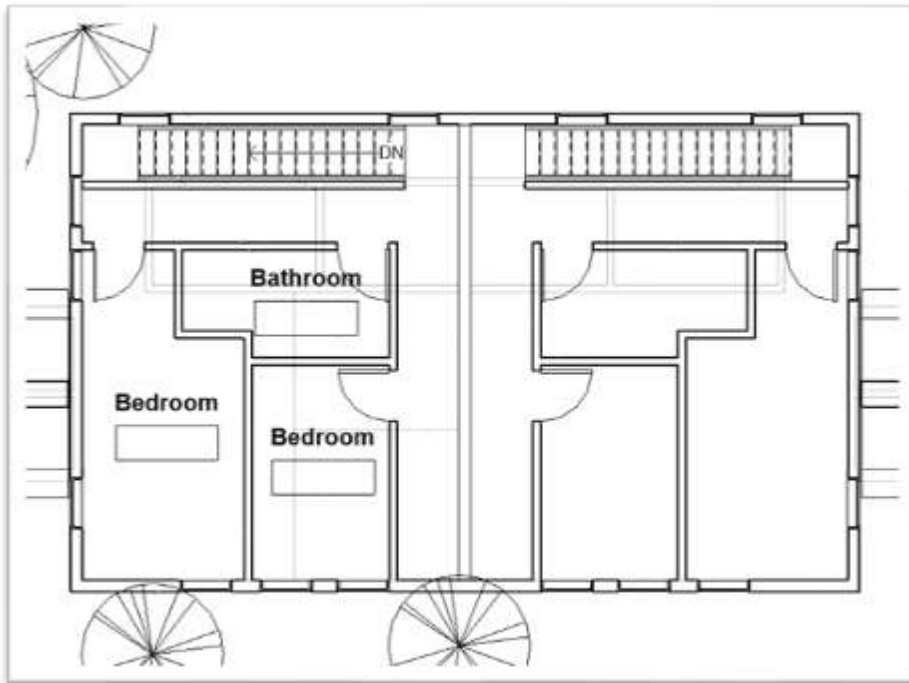
Back Side



Ground Floor Plan



Floor 2 Plan



All these buildings combined create a mini town, each with its own style while maintaining the brick appearance of every other building on campus. The apartment styles have repetition in their modular design, creating a sense of rhythm between them (Principles, Slide 52). The buildings are placed on the flat part of the land, to provide the least amount of material needing to be moved. This also means that there will be a smaller environmental impact. This is a form of preservation, keeping the existing trees on the property, both on the hill and in the quad area between Brinser and Ober (Organization Slide 26-30).

There will also be an amphitheater located near the tree line, near the back of the addition. This space provides more space in nature for students to either study or have class. The space slopes toward the tree line and has a large grass field leading up to it; positioning the theater in a perfect place to get away from the rest of the campus. Overall, the addition to campus will provide a higher-end housing option, offering people a separate space from campus, while embracing the unity with the surrounding landscape.

References

Wunderlich, Joseph. "Form." Architectural Design Theory. 2024.

Wunderlich, Joseph. "Form and Space I." Architectural Design Theory. 2024.

Wunderlich, Joseph. "Organization." Architectural Design Theory. 2024.

Wunderlich, Joseph. "Principles." Architectural Design Theory. 2024.

Wunderlich, Joseph. "Proportion and Scale." Architectural Design Theory. 2024.

Wunderlich, Joseph. (Upcoming book on Frank Lloyd Wright.) Architectural Design Theory. 2024.